



ASX/Media Announcement

19 April 2012

CHINA YUNNAN COPPER AUSTRALIA LIMITED (CYU) provides the opportunity to listen to an audio broadcast with **Jason Beckton, Managing Director** in a presentation titled "**Investor Roadshow Presentation**".

To listen go to the following link: <http://www.brr.com.au/event/96163>

A copy of the investor presentation was released to the ASX on 17 April and is also attached to this announcement.

A handwritten signature in black ink, appearing to read 'Jason Beckton'.

Jason Beckton
Managing Director - CYU

Enquiries:
Mr Jason Beckton
Managing Director
CYU
0438 888 612

www.cycal.com.au

Major
Partnerships
for
Major
Discoveries



CHILE – QUEENSLAND - LAOS



CHINALCO YUNNAN COPPER RESOURCES





Cautionary Note & Competent Persons Statement

CAUTIONARY NOTE

Whilst this document and presentation is based on information from sources which are considered reliable, Chinalco Yunnan Copper Resources Ltd (“**Chinalco Yunnan**”), its employees and consultants do not represent, warrant nor guarantee, by expression nor implication, that the information in this document and presentation is complete or accurate. To the maximum extent permitted by law, Chinalco Yunnan disclaims any responsibility to inform any recipient of this document and presentation of any matter that subsequently comes to its notice, which may affect any of the information contained in this document and presentation.

COMPETENT PERSONS STATEMENT

The information in this report that relates to the Inferred Resource for the Elaine Project is based on information compiled by Jason Beckton, who is a Member of the Australian Institute of Geoscientists and is Managing Director of Chinalco Yunnan Copper Resources Ltd. Mr Beckton has sufficient experience relevant to the style of mineralisation and type of deposit under consideration and to the activity he is undertaking to qualify as a Competent Person as defined in the 2004 Edition of the "Australasian Code for Reporting of Exploration Results and Mineral Resources". Mr Beckton consents to the inclusion in the report of the matters based on his information in the form and context in which it appears.

The information in this report that relates to Exploration Results for all prospects is based on information compiled by Richard Hatcher, who is a Member of the Australian Institute of Geologists, and is the Exploration Manager of Chinalco Yunnan Copper Resources Ltd. Mr Hatcher has sufficient experience relevant to the styles of mineralisation and type of deposits under consideration and to the activity he is undertaking to qualify as a Competent Person as defined in the 2004 Edition of the "Australasian Code for Reporting of Exploration Results and Mineral Resources". Mr Hatcher consents to the inclusion in the report of the matters based on his information in the form and context in which it appears.



Company Snapshot

ASX Code CYU

Market Cap \$32.1m

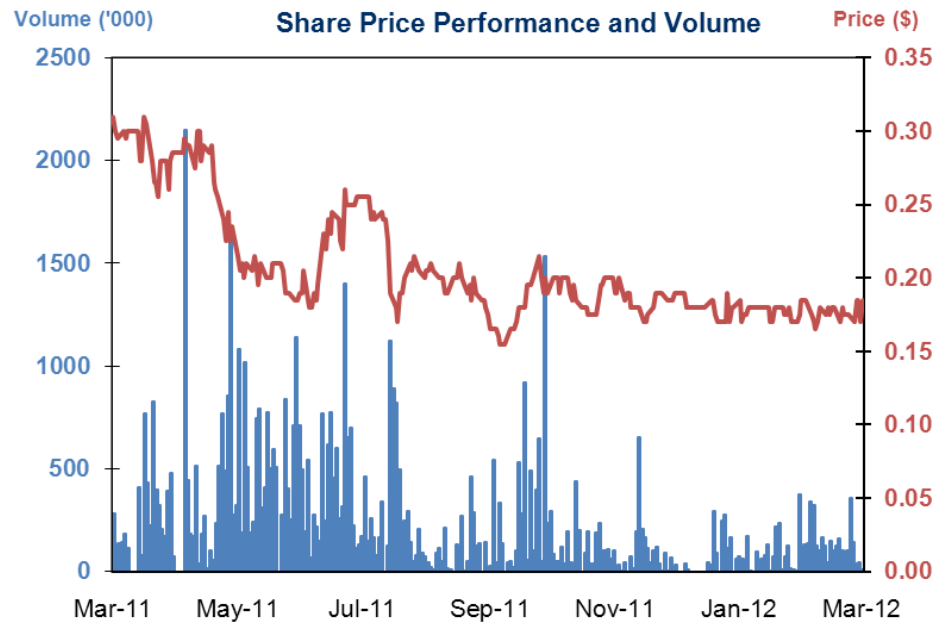
Shares on Issue 173.4m

Options on Issue 16.9m

Total Shareholders c. 1500

Cash (31 Dec 2011) 7.5m

Top 20 Holdings 53.7%



Company Snapshot



Norman Zillman
Non-Executive Co-Chairman

ex Queensland Gas, Great Artesian Oil and Gas, Queensland Government – based in Brisbane



Zhihua Yao
Non-Executive Co-Chairman

Deputy General Manager of YCI, over 28 years mining & exploration experience in China – based in Kunming



Jason Beckton
Managing Director

ex Pancontinental, Goldfields RGC, Gympie Gold, Bolnisi Mexico, Exeter Resource Chile – based in Santiago



Zewen Yang
Executive Director

Yunnan Copper, Economics Executive – based in Sydney



Richard Hatcher
Exploration Manager

ex Bolnisi Queensland & Mexico, Kings Minerals – Mexico – based in Brisbane



James Cran
Chief Geologist

ex Newmont Tolukuma - Sappes, Gympie Gold & EMED Resources – Cyprus and Slovakia – based in Brisbane





Exceptional Team

SIGNIFICANT COMPANY BUILDING AND DISCOVERY TRACK RECORD

Chairman, Norman Zillman

Former Managing Director QGC

Managing Director, Jason Beckton

Palmarejo 3.1m oz - Subject of a \$1.1bn takeover by Coure Delene; Caspiche Porphyry, Chile: **40m oz gold** for Exeter

Chief Geologist, Jim Cran

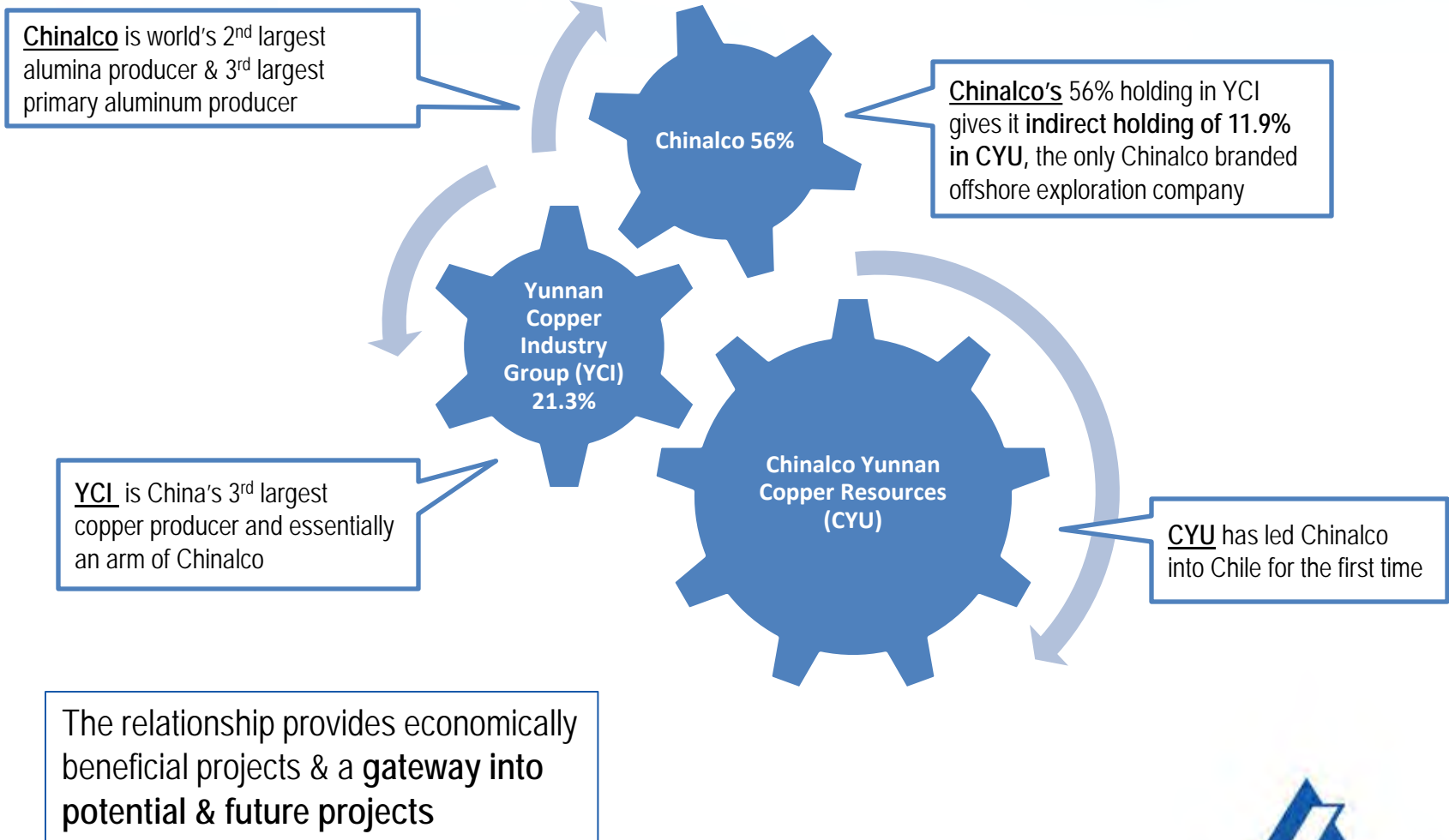
Tolukuma, Viper discovery Greece, Biely Vrch porphyry gold deposit in Slovakia for Eastern Mediterranean Resources

Exploration Manager, Richard Hatcher

Palmarejo, Cerro del Gallo – Kings Minerals



Exceptional Partner: Chinalco





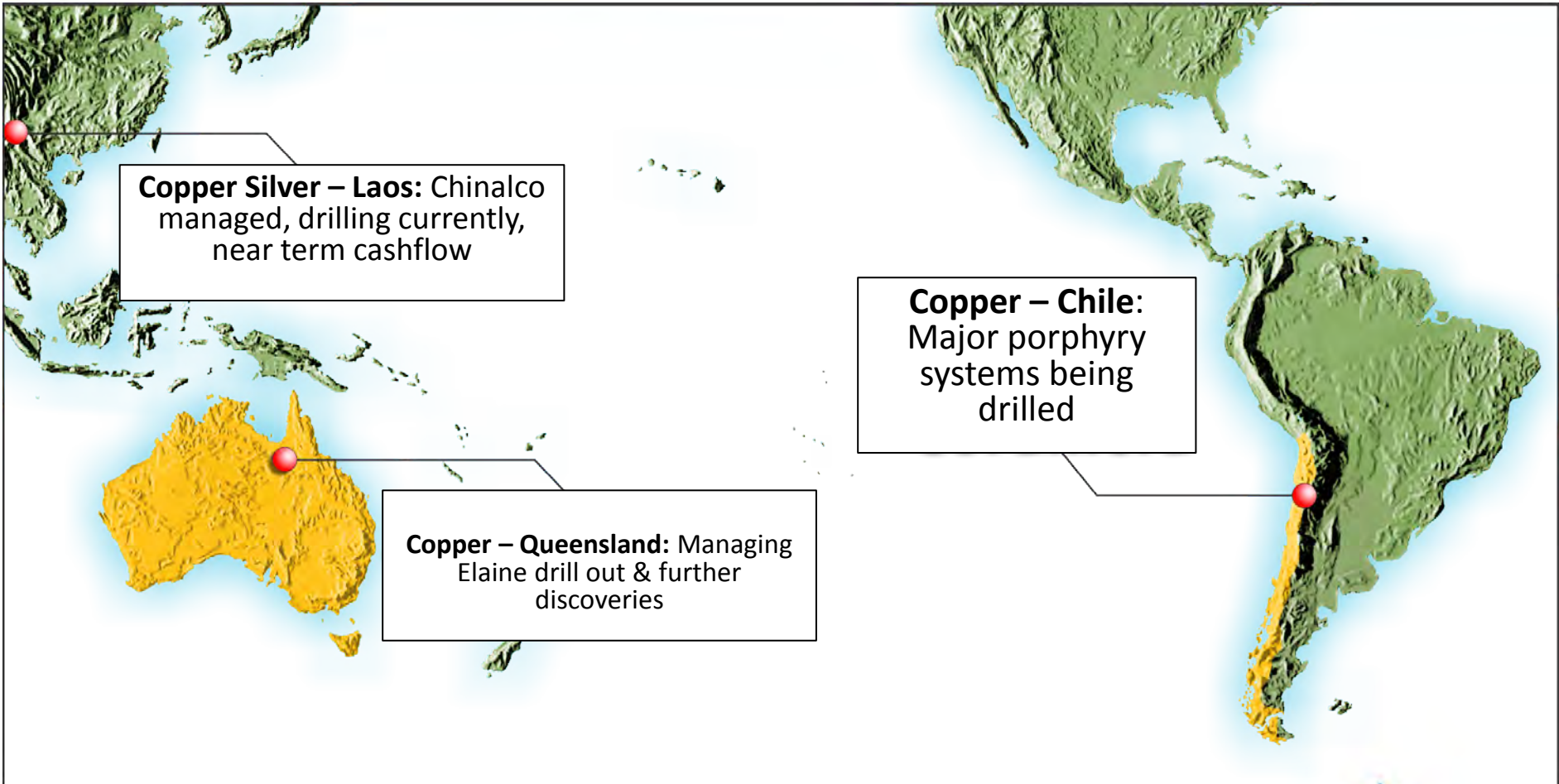
Investment Highlights

Most active period in the company's history:

- **Currently** drilling major porphyry copper systems in Chile with Rio Tinto
- Second Rio Tinto JV to be drilled **IMMEDIATELY** following current program
- Currently performing resource calculation AND continuing drilling at our new discovery in the Mt Isa region – **122.7m @ 0.55% Cu, 317 ppm Co. uranium & rare earths**
- **Currently drilling** Zambian style copper-silver projects in Laos with results pending from recently completed programs in Laos – JV operated by Chinalco
- Laos – Chinalco smelters nearby – natural path for monetising discoveries. Projects are advanced & have Chinese resources – JORC process underway. Potential for rapid development & cash flow using Chinalco infrastructure
- Tier 1 partners: **Chinalco Yunnan Copper, Rio Tinto & Xstrata Copper**
- **Three tier strategy:**
 - Targeting giant porphyry systems in **Chile**; building on major discoveries in **Mt Isa** region; pushing towards development in **Laos**



Project Diversity





Tier 1 Partners & Projects

AUSTRALIA, QUEENSLAND

Goldsearch Limited: Mary Kathleen JV – including Elaine

Xstrata Copper: Mt Frosty JV

CHILE, ANDEAN CORDILLERA

Rio Tinto Exploration: Palmani, Caramasa, Candelabro

Xstrata Copper: Humitos

LAOS, COPPER SILVER NORTHERN SECTOR

Yunnan Copper Group: Laos Copper Silver Properties



RioTinto

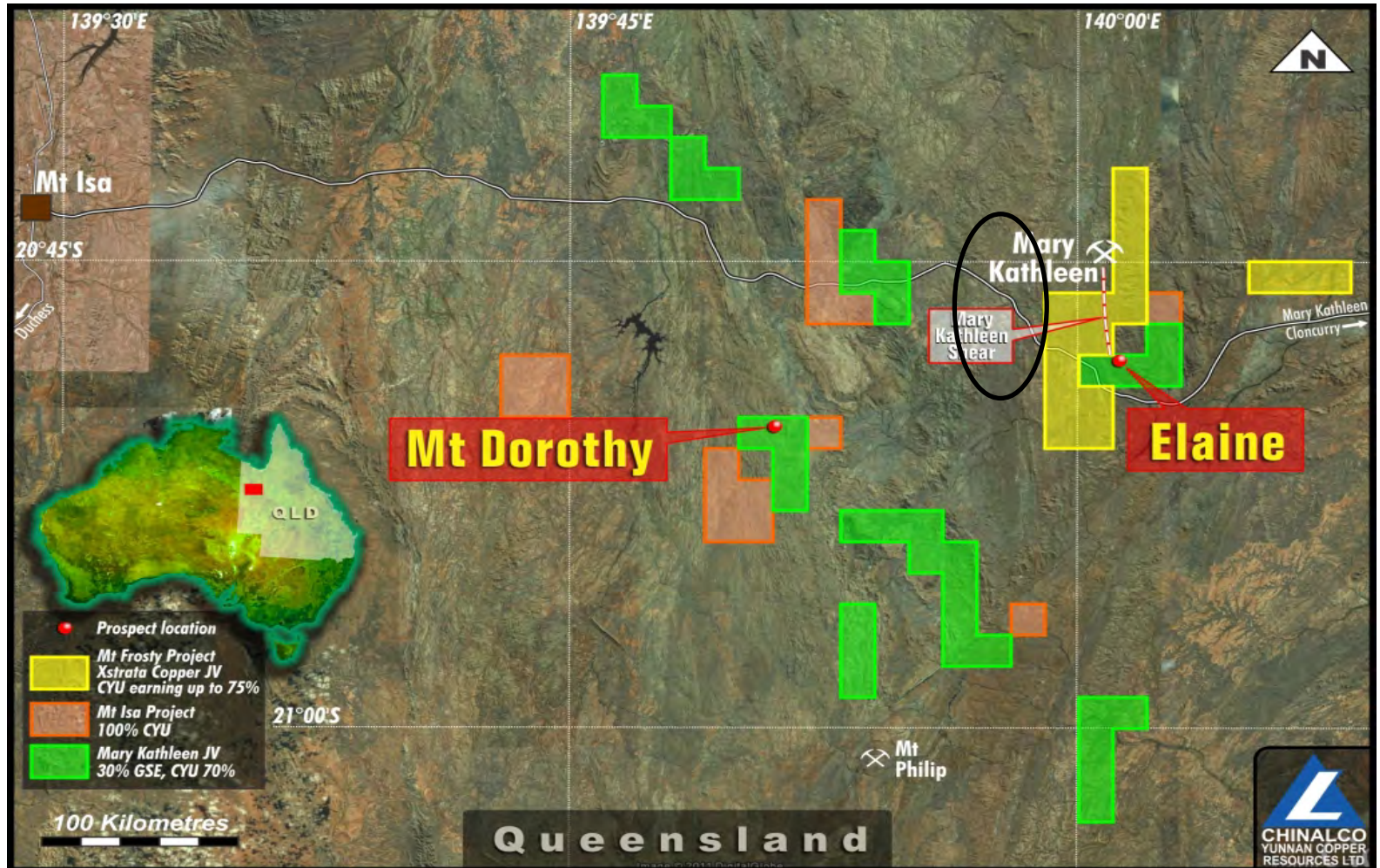


Queensland

- Mt Isa/Cloncurry Region
- Home to some of the biggest discoveries in Australian mining history
- Ernest Henry
- We have a discovery
- Thick intersections 100m +
- Copper, gold, cobalt, rare earths & uranium



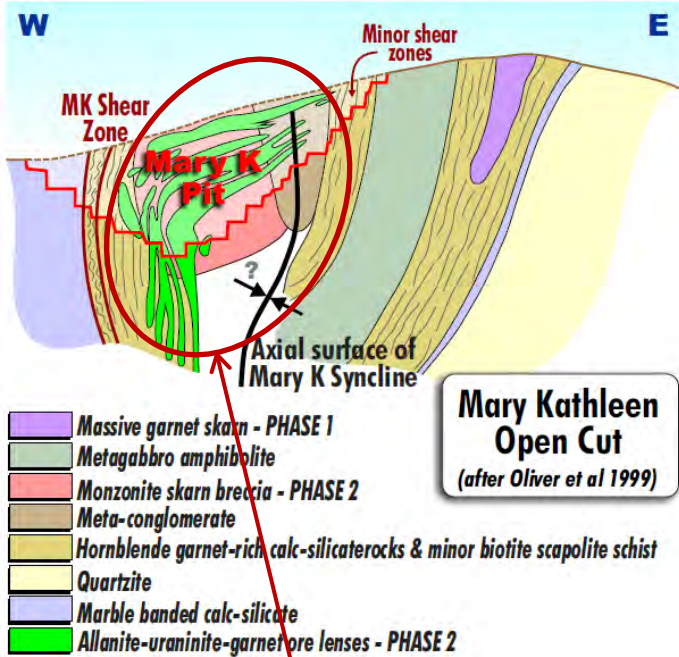
Queensland – Projects & Possibilities



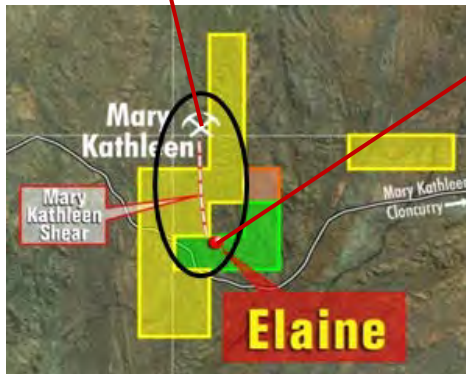
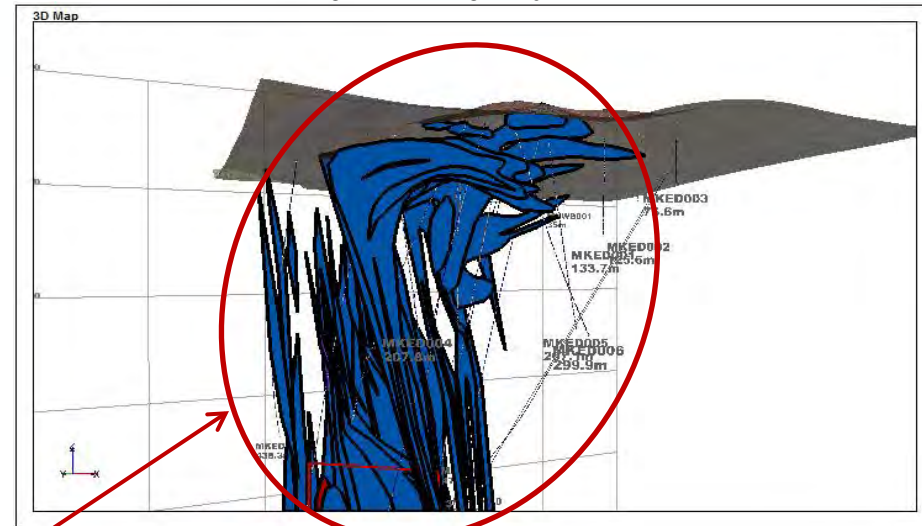
Elaine to Mary Kathleen – 6 km of untested strike of probable skarn replacement mineralisation

Queensland – Further Resource Potential

Mary Kathleen, looking north along Mary Kathleen Shear



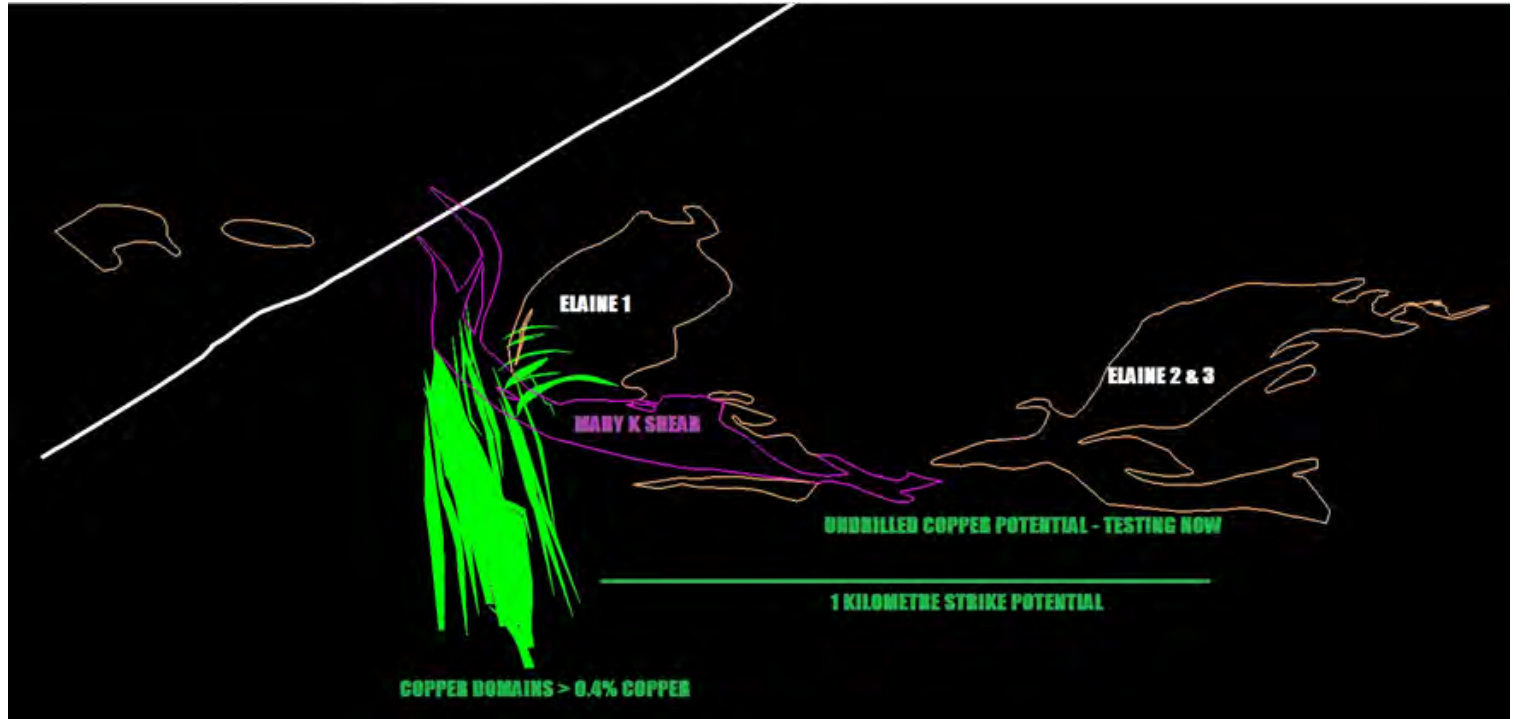
Elaine, looking north along Mary Kathleen Shear



- Suggestive that the 6km untested shear between Mary Kathleen & Elaine is host to multiple deposits

Elaine/Mary Kathleen Model

ELAINE/MARY KATHLEEN: 6 KMS OF UNTESTED STRIKE BETWEEN THE TWO



As per Mary K, recent modeling indicates Mary K Shear feeds near horizontal mineralisation – in this copper greater than 0.4% is depicted based on 23 holes drilled so far – main target remains the Mary K Shear with highest grades of copper



Why Chile?

- Largest copper mines in the world
- Multi-billion ton operations
- Dominated by world's top copper companies
- Opportunity for a major discovery



Chile Projects: Porphyry Copper Exploration

- 2000m diamond drill program is underway at Candelabro
- 60km north is Caramasa to be drilled immediately following Candelabro
- Adjacent to Peruvian border. Major structures run into Peru. Chile better jurisdiction
- Caramasa – RIO JV seeking major multi-porphyry systems. Major system targeting major resources
- How did this Opportunity arise? Chinalco relationship. Previous working relationship with Rio
- Exceptional large size targets only possible in this region
- Palmani also Rio JV – drilling preparations also underway in coming months
- Humitos 100% CYU-owned claims plus farming into enveloped Xstrata copper property



Chile: 1. Candelabro

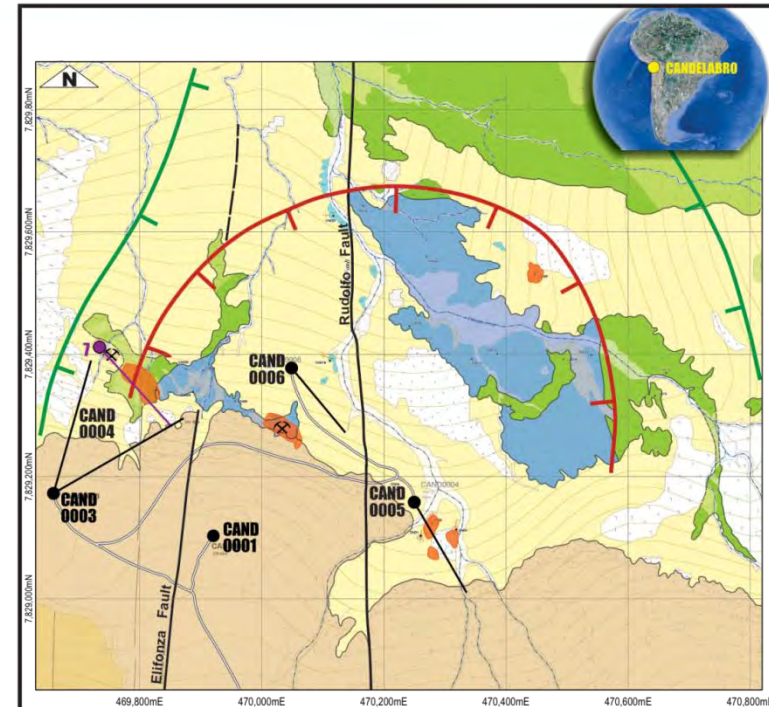
- CYU/Rio Tinto JV
- Four diamond holes commenced – underway
- The system has had geological mapping, sampling & geophysical profiles completed to allow drill targeting
- Significant fieldwork at excellent technical level completed by Rio



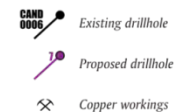
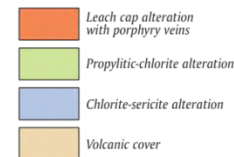
Chile: Drilling Candelabro

CYU DRILLING A RIO TINTO DISCOVERY

- Proposed location 4 just completed, moved to proposed location 6
- Sulphides intercepted, vectoring to centre of system with subsequent drilling



Reference



China Yunnan Copper Resources Ltd
Rio Tinto-CYU JV, Chile
Candelabro Project
**Geology, Alteration
& Drilling**

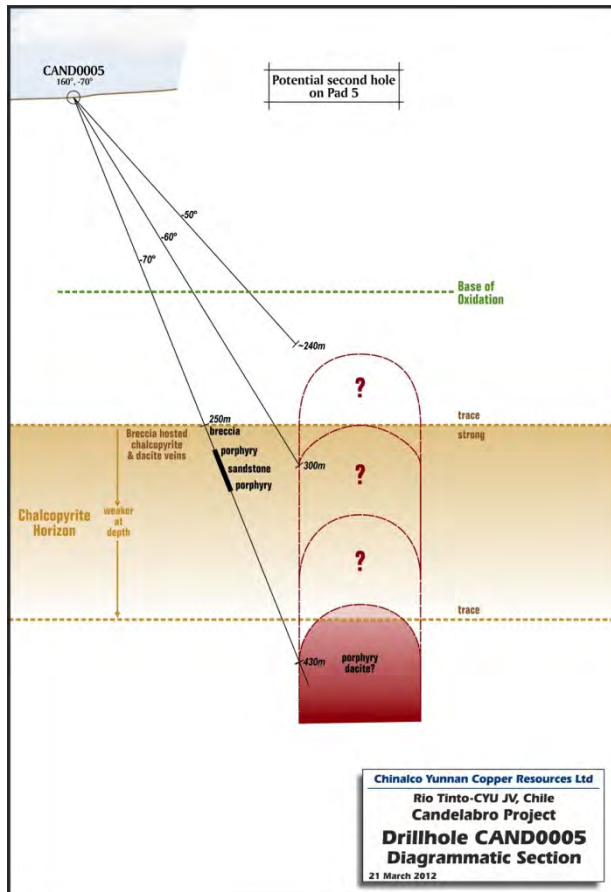
26 March 2012

0 25 50 100 150 200 250 Metres

Chile: Drilling Candelabro

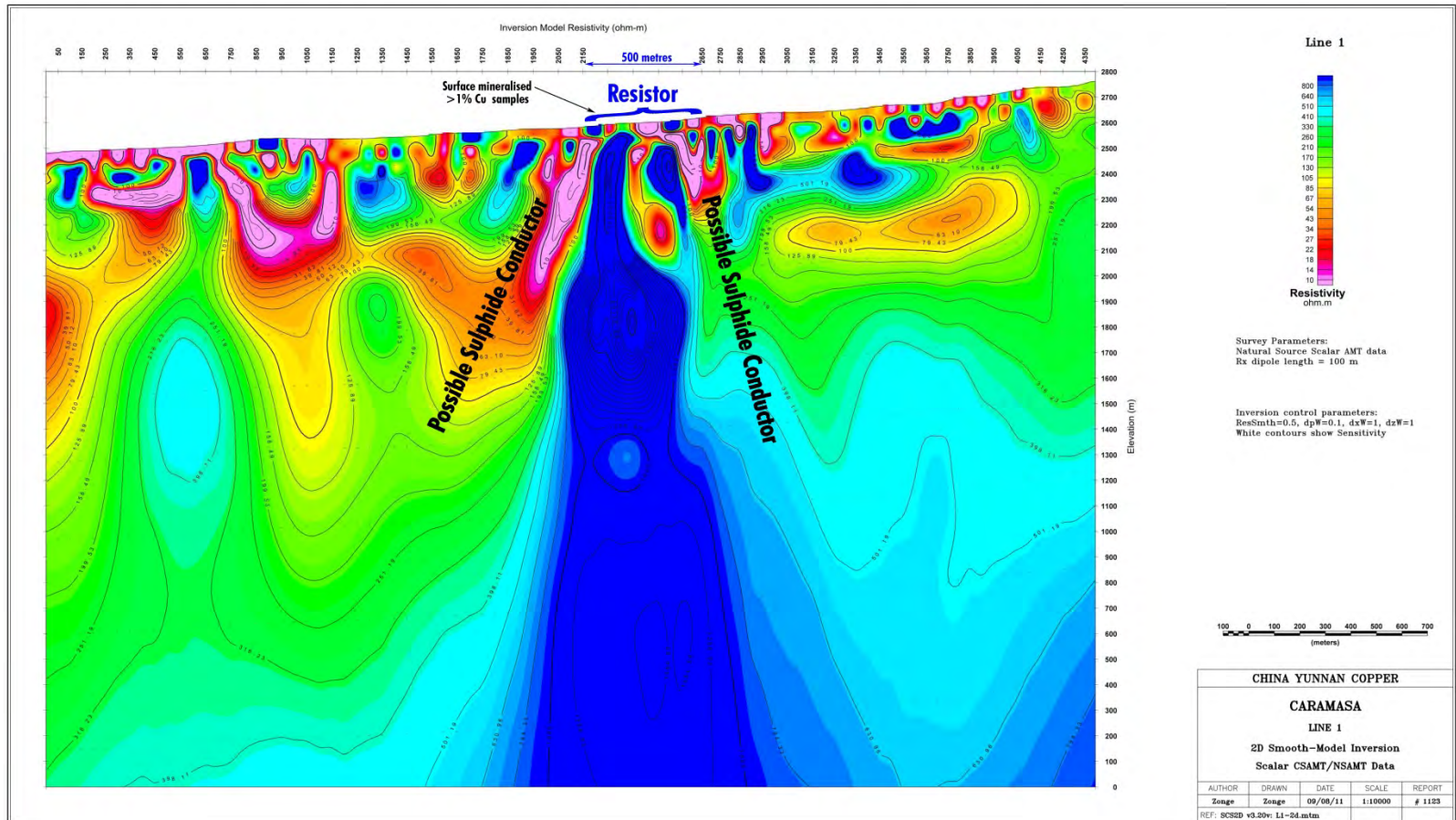
VISUAL RESULTS ENCOURAGING

Visual copper porphyry intercept for first hole CAND0005

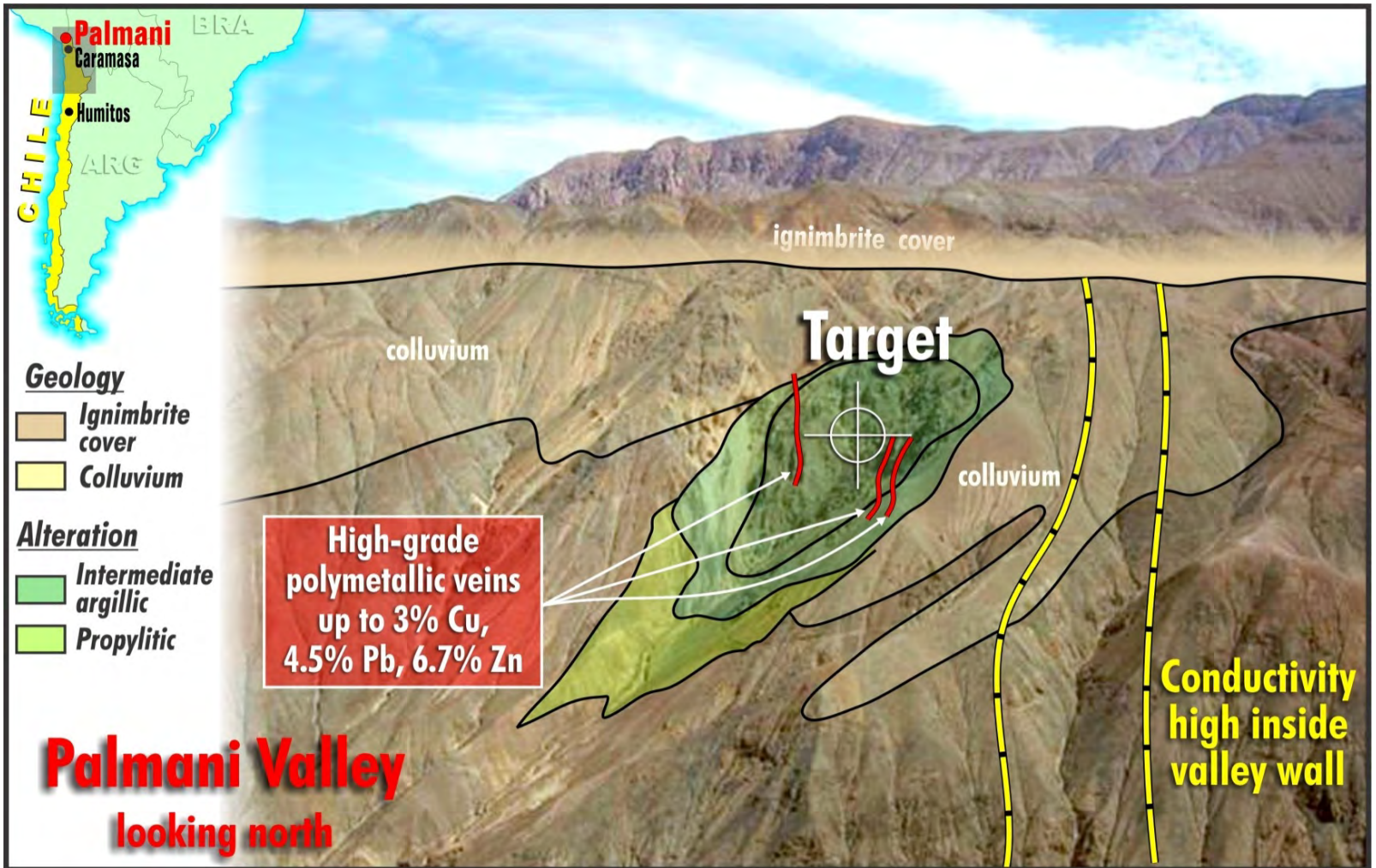


Chile: 2. Caramasa JV

EXCITING NEW GEOPHYSICS: Caramasa mineralised intrusion coincides with newly defined resistor 200m thick with possible conductive sulphides on flanks. Compelling target to be drilled starting with 2000m. Drill road complete



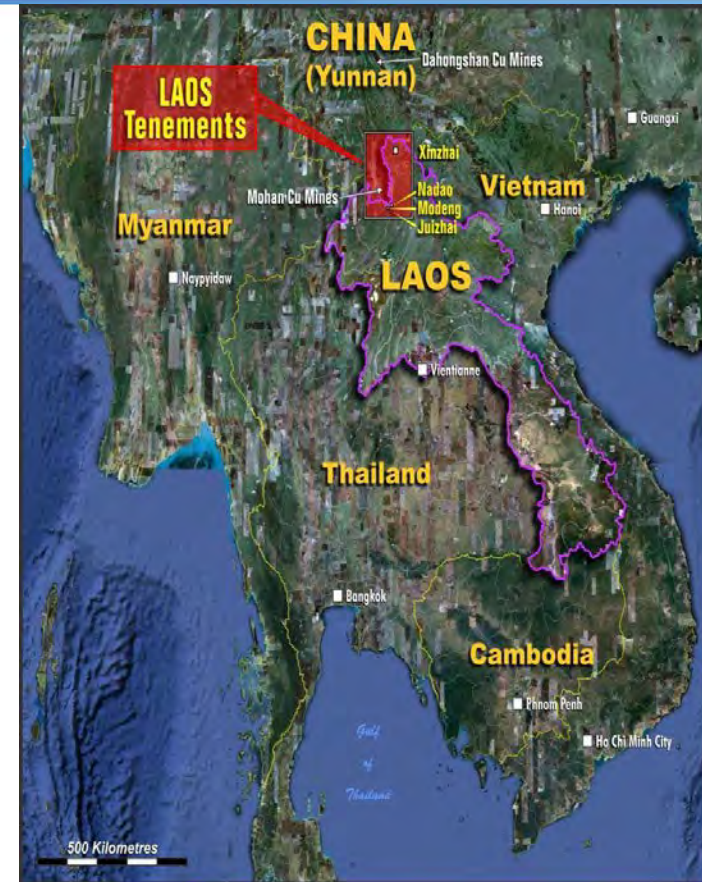
Chile: 3. Palmani Rio JV



Laos: Projects

FOCUS ON SHORT TERM CASH FLOW

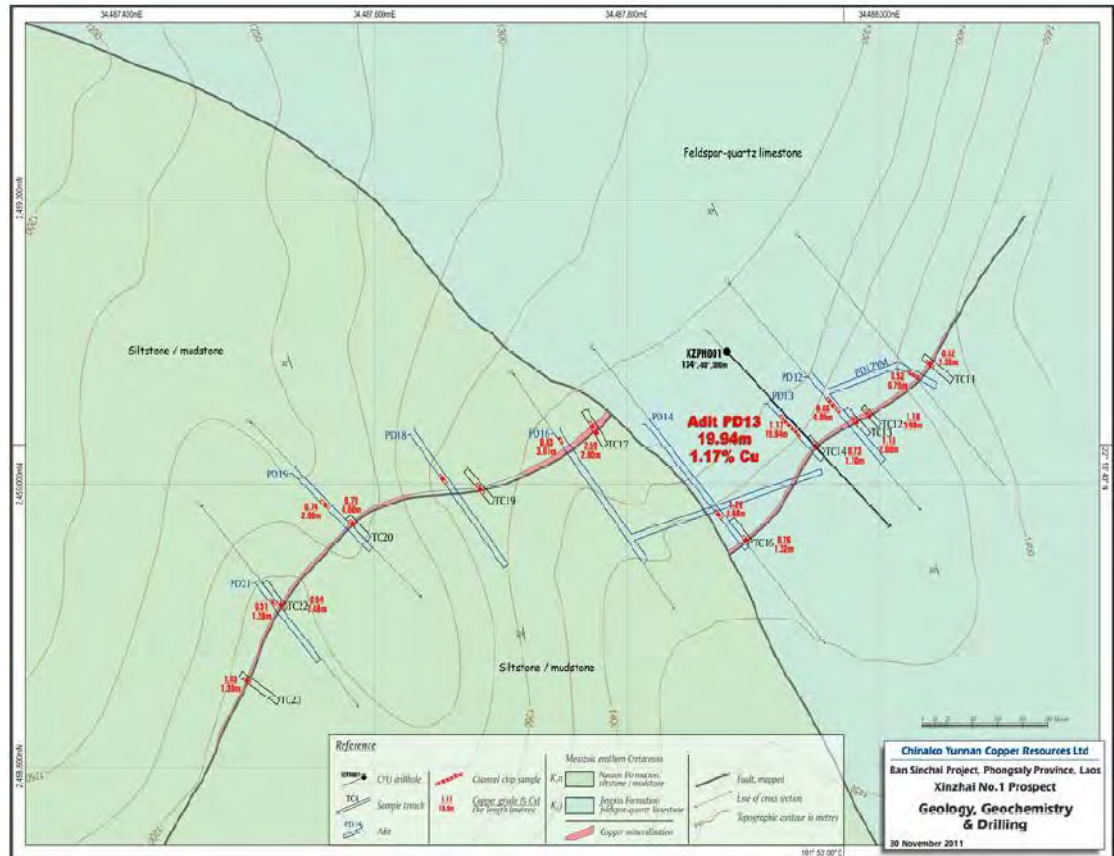
- Development & production options through Yunnan Copper & Chinalco. Chinalco smelters situated in nearby Kunming
- Zambian-style sediment hosted copper silver deposits
- Corporate target 100Mt @ 1% copper & 120g/t silver
- JORC Resource drill outs currently taking place at Xinzhai & Juizhai
- Any resources discovered are of great value given straightforward development pathway



Laos: Drilling

XINZHAI DRILLING:

Hole XZP001 is to test the dipping extension of known mineralisation defined by trenches & adits. Visual copper silver intercepts, assay results due in coming weeks





Summary

AUSTRALIA

Elaine

New Discovery – confirmed copper gold cobalt REE uranium thorium sulphide zones. End of Q2 2012 Resource estimate tabulation expected to include nearby existing JORC Inferred 83kt @ 3,200 ppm total rare earth. Mary Kathleen model of near billion dollar gross in situ value.

Mount Frosty

CYU farming into Xstrata Copper's project & planning to commence exploration on known Elaine style REE copper gold sulphide occurrences

CHILE

Currently drilling Candelabro Prospect. Mega scale targets in copper porphyry exploration program in world's premier copper jurisdiction with tier one partners in Rio Tinto & Xstrata Copper. Candelabro first to be drilled & new geophysics from Caramasa enhance the drill target

LAOS

Currently drilling Jinzhai & Xinzhai. Copper silver development JV to prove up & grow existing targets in 2012 to feed nearby processing facilities. Trench results have highlighted Zambian-style mineralisation of copper & silver





Contact Details

Level 5, 10 Market Street,
Brisbane QLD 4000

Telephone: +61 7 3212 6204

Fax: +61 7 3212 6250

www.cycal.com.au

Jason Beckton:

Jason@cycal.com.au

