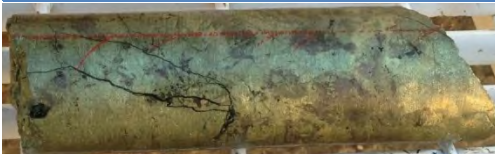




CHINALCO
YUNNAN COPPER
RESOURCES LTD
ASX : CYU



INVESTOR AND MEDIA BRIEFINGS

9 July 2013





Disclaimer & Competent Person Statement

DISCLAIMER

This presentation has been prepared by Chinalco Yunnan Copper Resources Ltd (CYU) for the sole purpose of providing an overview of its current prospects and proposed exploration and development strategy to recipients. This presentation is based on information available to CYU as at the date of the presentation. The presentation contains selected information and does not purport to be complete. It should be read in conjunction with CYU's other periodic and continuous disclosure announcements lodged with the Australian Securities Exchange.

This presentation contains statements that are subject to risk factors associated with the mining industry. It is believed that the expectations reflected in this presentation are reasonable, but they may be affected by a range of variables which could cause actual results or trends to differ materially, including (but not limited to) price fluctuations, actual demand, currency fluctuations, drilling and production results, reserve estimates, loss of market, industry competition, environmental risks, physical risks, legislative fiscal and regulatory developments, economic and financial market conditions in various countries and regions, political risks, project delay or advancement, approvals and cost estimates.

No representation or warranty, express or implied, is made as to the fairness, accuracy, completeness or correctness of the information, opinions and conclusions contained in this presentation. To the maximum extent permitted by law, none of CYU, its directors, employees, agents or advisors, accepts any liability for any loss arising from the use of this presentation or its contents including (but not limited to) any liability arising from fault or negligence on the part of CYU, its directors, employees, agents or advisors.

The information in this presentation does not take into account the investment objectives, financial situation and particular needs of any recipient. Recipients of this presentation should not make an investment decision on the basis of this presentation alone and recipients should conduct their own inquiries and make their own assessment about the content of this presentation.

Maps and diagrams used in this presentation are illustrative only and may not be drawn to scale. Unless otherwise stated, all data contained in charts, graphs and tables is based on information available at the date of this presentation.

COMPETENT PERSON STATEMENT

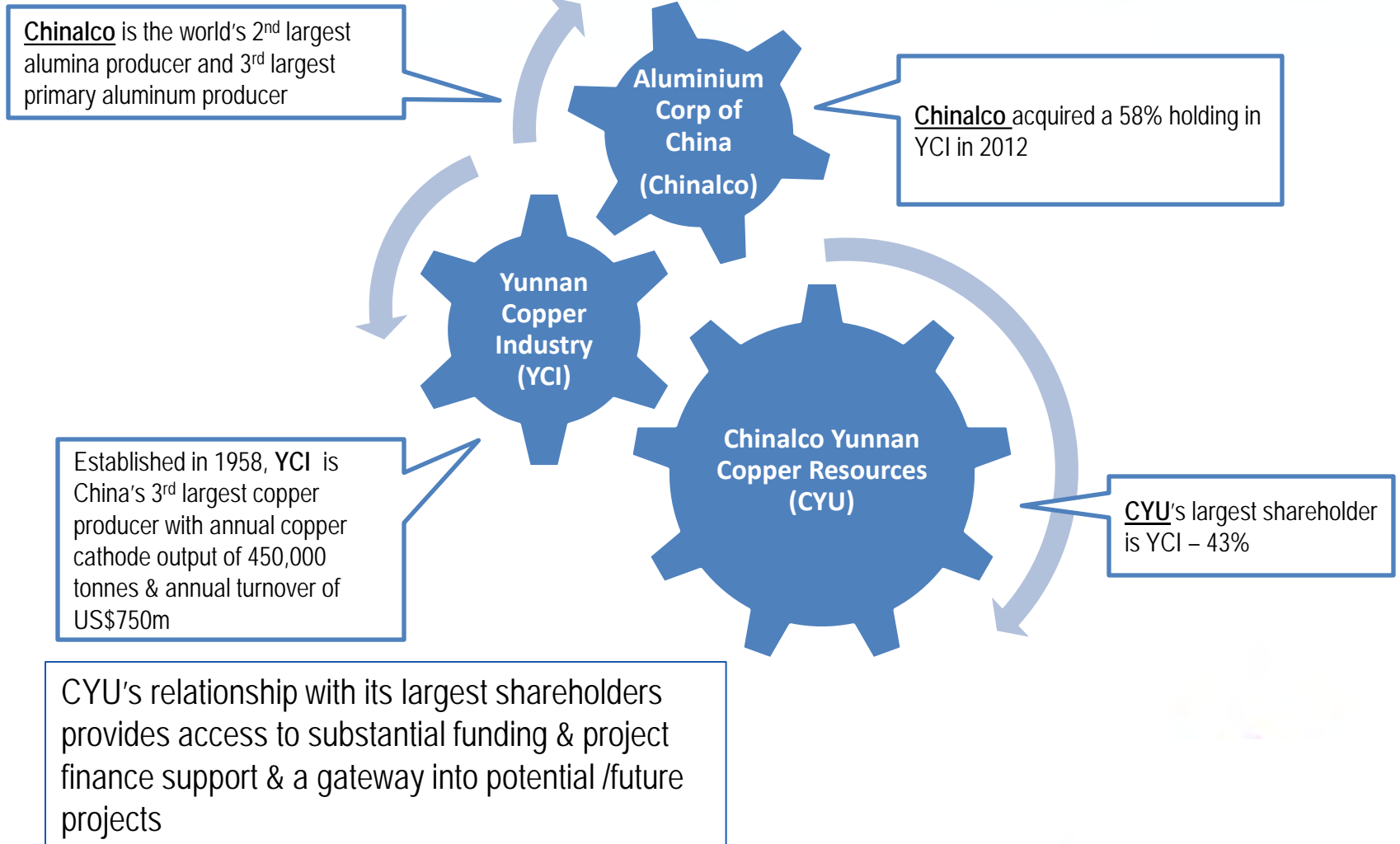
The information in this report that relates to Exploration Results for all prospects and the Inferred JORC Resources for both the Elaine copper+gold and uranium+rare earth element prospects is based on information compiled by Richard Hatcher, who is a Member of the Australian Institute of Geologists, and is an Executive Director of CYU. Mr. Hatcher has sufficient experience relevant to the styles of mineralisation and type of deposits under consideration and to the activity he is undertaking to qualify as a Competent Person as defined in the 2004 Edition of the "Australasian Code for Reporting of Exploration Results and Mineral Resources". Mr. Hatcher consents to the inclusion in the report of the matters based on his information in the form and context in which it appears.



CYU's Corporate Objective

**Become a significant producer of
copper and other minerals within
3 years**

CYU's Largest Shareholders





How to Achieve the Corporate Objective?

Three ways that CYU intends to achieve goal of production within three years

1. Continuing exploration and development existing projects
2. Working closely with representatives of Yunnan Copper to develop opportunities through the San Mu joint venture
3. Acquire new projects that are already in production or close to production



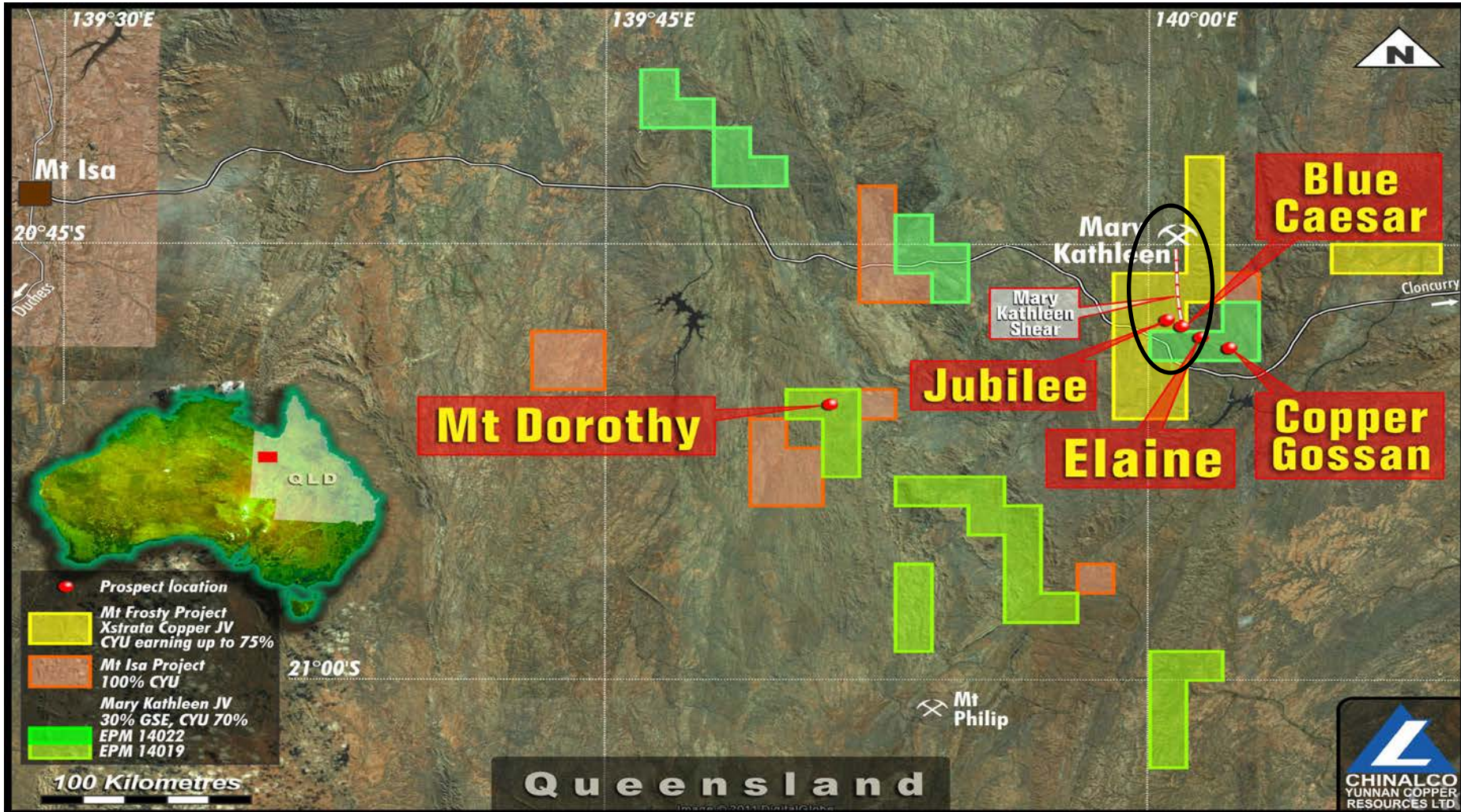
How to Achieve the Corporate Objective? (*cont.*)

By virtue of its close relationship with both Chinalco and Yunnan Copper, CYU has the unique capacity (in the current market conditions) to access substantial financial support. This financial support is to be used to:

- * fund the purchase price of new project assets that CYU intends to acquire
- * secure project development funding, in the case of project assets that require significant construction & development capex before production commences
- * assist with CYU equity raising designed to provide additional working capital to support any new project acquisition

Queensland – Projects & Possibilities

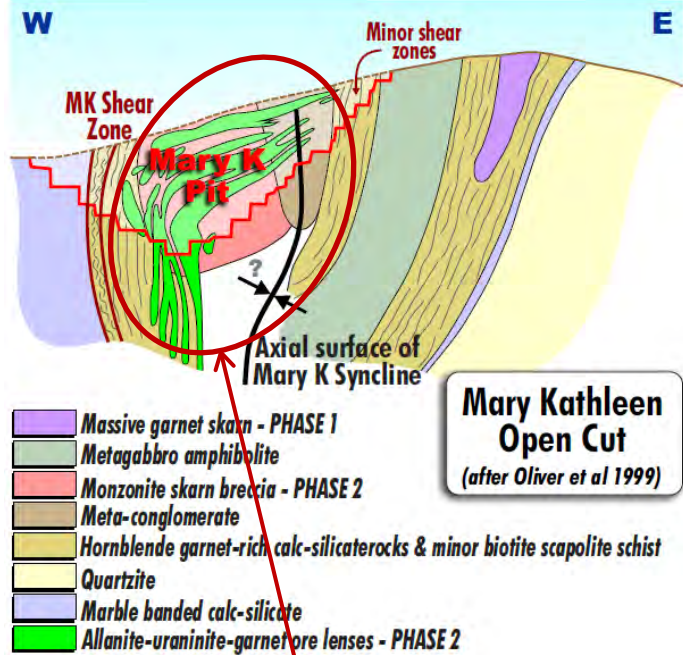
Mary Kathleen Shear Zone – 12 km of untested strike



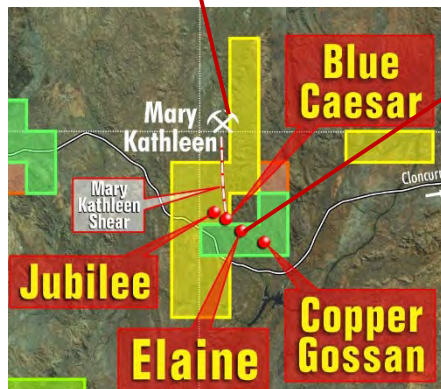
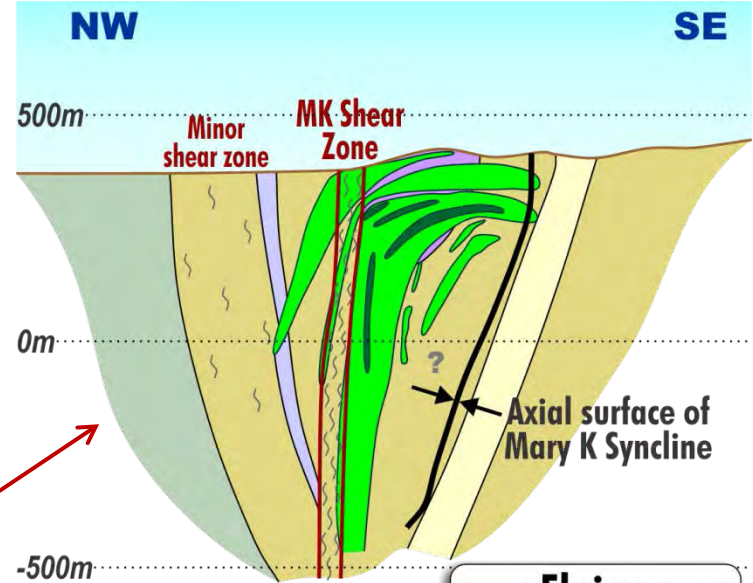
Queensland – Elaine Inferred JORC Copper+Gold Resource

27.7Mt@0.60% CuEq* (0.53% copper & 0.08g/t gold)

Mary Kathleen, looking north along Mary Kathleen Shear



Elaine, looking north along Mary Kathleen Shear



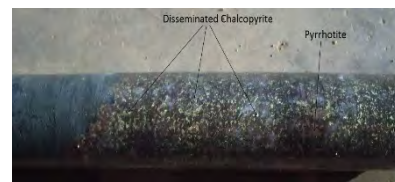
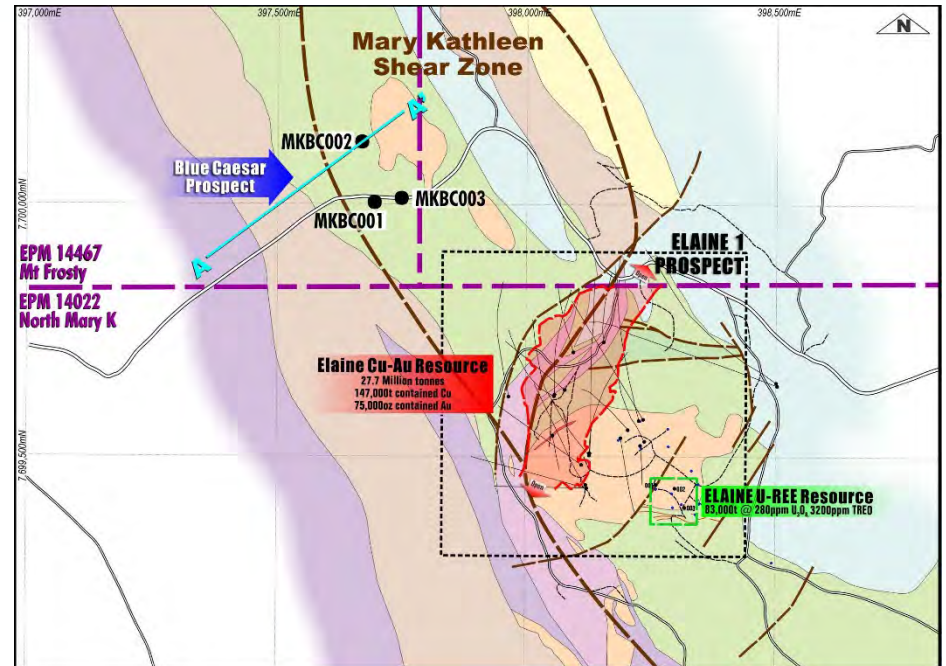
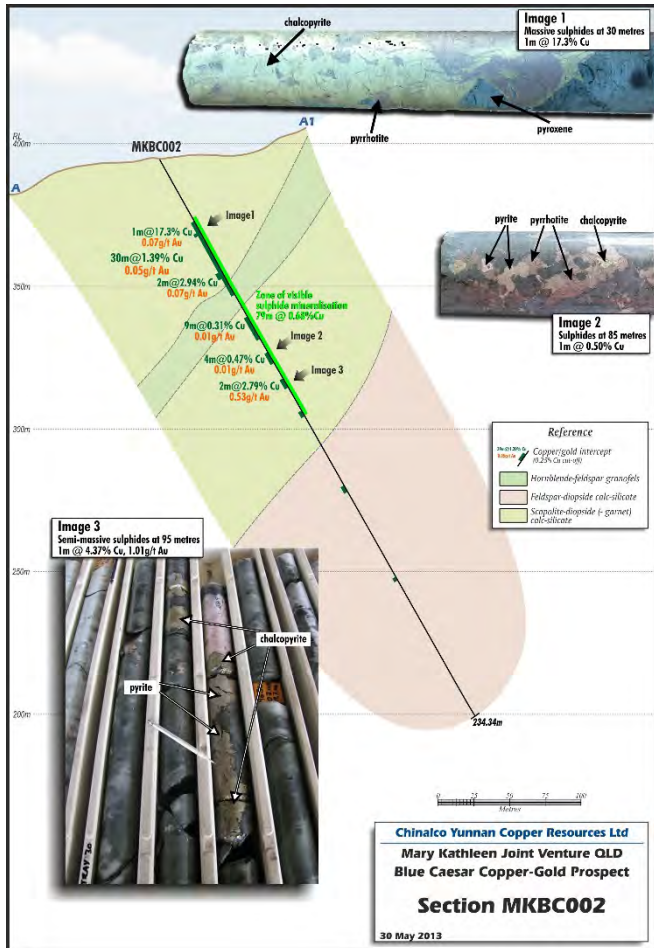
QLD – CURRENTLY 150,000t, TARGETING 1,000,000t FINE CU

8km untested shear between Mary Kathleen and Elaine, possible host to multiple deposits

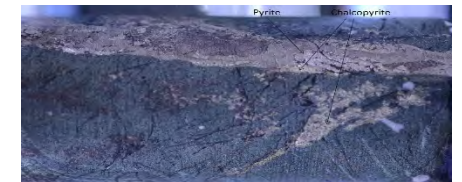
Queensland – Mary Kathleen Shear Zone Regional Targets

- Blue Caesar – Phase I Drilling Complete

Mary Kathleen Shear Zone – Blue Caesar first regional target identified and tested. Five additional targets to be tested



MKBC003 – Mineralisation @ 39m
3.12% copper



MKBC003 – Mineralisation @ 60m
1.69% copper

Blue Caesar – strong co-incident, geochemical, geophysical and geological anomalies. Targeting using exploration model developed for Elaine. **Shallow (~20m) copper sulphide mineralisation intersected**

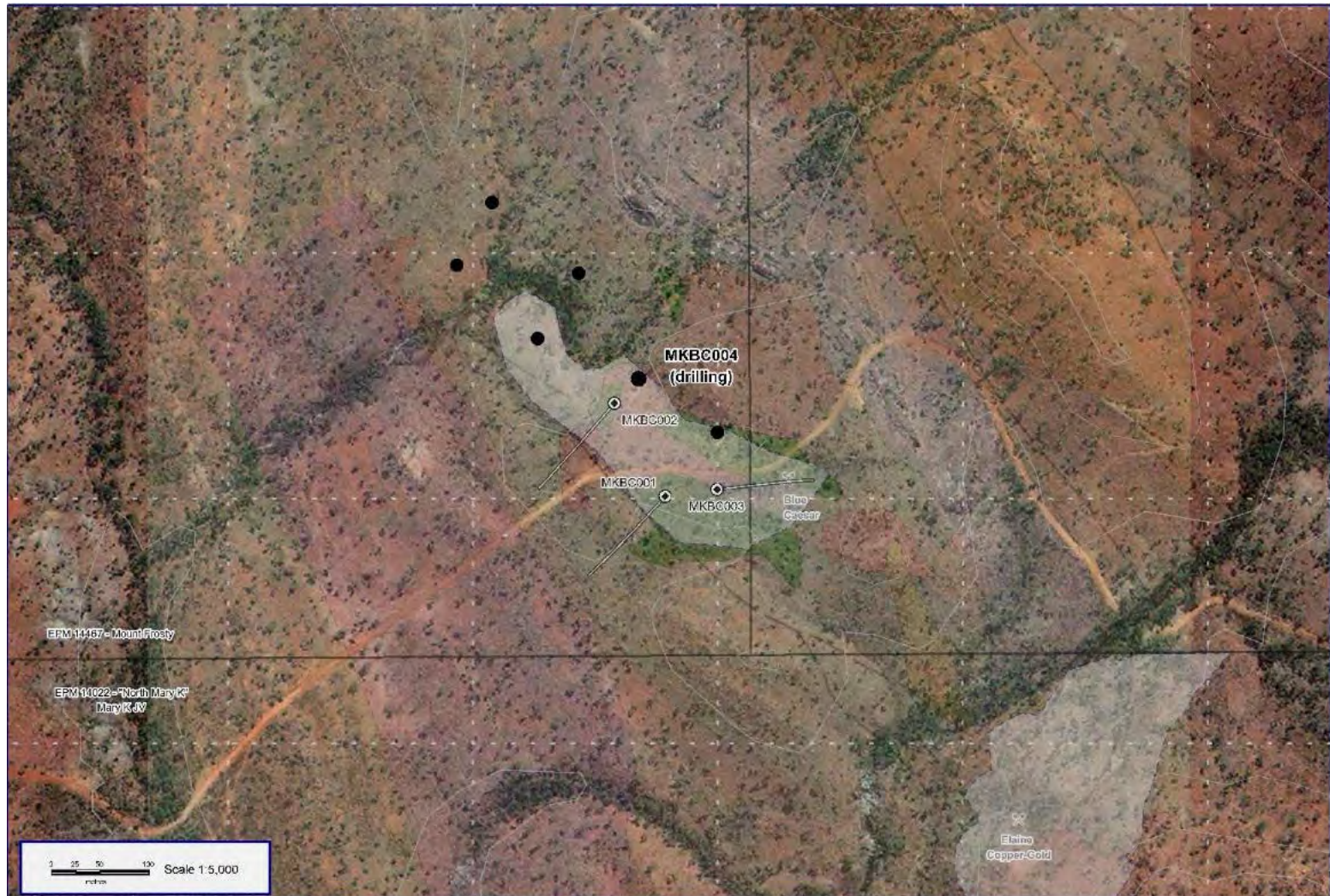


Queensland – Mary Kathleen Shear Zone Regional Targets - Blue Caesar – Phase II Drilling Commenced

Phase II of the Blue Caesar drilling program has commenced.
Features of the program include:

- * 1000m of diamond exploration drilling across an estimated 6-8 holes
- * stepping out from the MKBC002 drill hole, down dip and at 100m line spacing
- * looking to further validate existing Elaine exploration model
- * EH4 geophysical survey has also commenced, targeting further prospective zones to the north of Blue Caesar.

Queensland – Mary Kathleen Shear Zone Regional Targets - Blue Caesar – Phase II Drilling Commenced (Cont)





Mary Kathleen Shear Zone – A New Perspective

Conventional geological interpretation of mineralisation in the Mary Kathleen region is that these are mostly “skarn” formations.

[Skarns are formed from calcite-rich rocks (limestones and dolomites) reacting with the heat and fluids pushed up by intrusions of granite magma. High grade but most often small and discontinuous levels of mineralisation occurs within the skarn.]

Based on detailed preliminary analysis and interpretation of geochemical “signatures”, CYU (and its geological team) is developing a new perspective that the Mary Kathleen Shear Zone mineralisation (such as at Elaine) is NOT limited to skarn mineralisation.



Mary Kathleen Shear Zone – A New Perspective (Cont.)

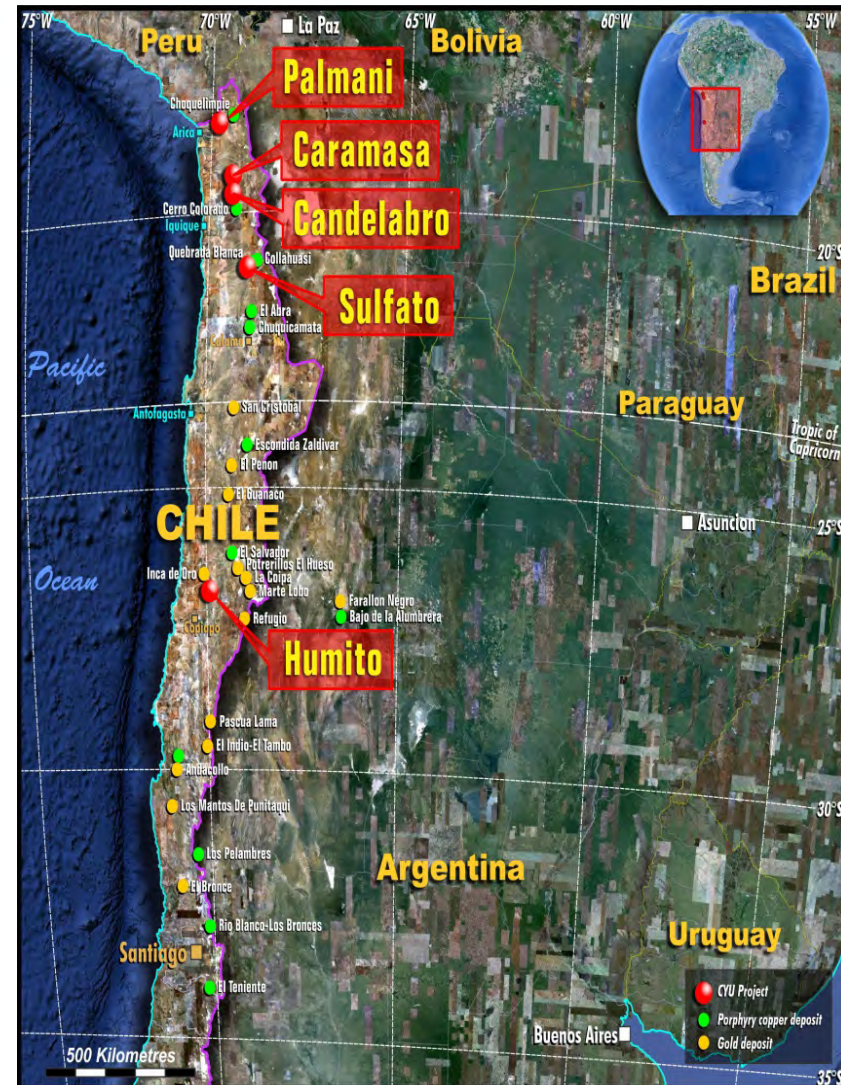
CYU investigating that the Mary Kathleen Shear Zone fluids have a geochemical signature consistent with deep alkaline intrusive bodies – derived from the earth’s mantle – with the Shear Zone providing the plumbing.

[The earth’s “mantle” is a highly viscous layer between the earth’s crust and its outer core, rich in mineralisation].

Preliminary analysis of the geochemical signatures conducted by CYU’s geological team is showing a consistency with known alkaline-intrusive suites which (in other parts of the world) are well-known for hosting a diverse range of minerals – U, Cu, Ni, REE, Th, Au, PGE etc.

Chile: CYU in the Porphyry Copper Belt

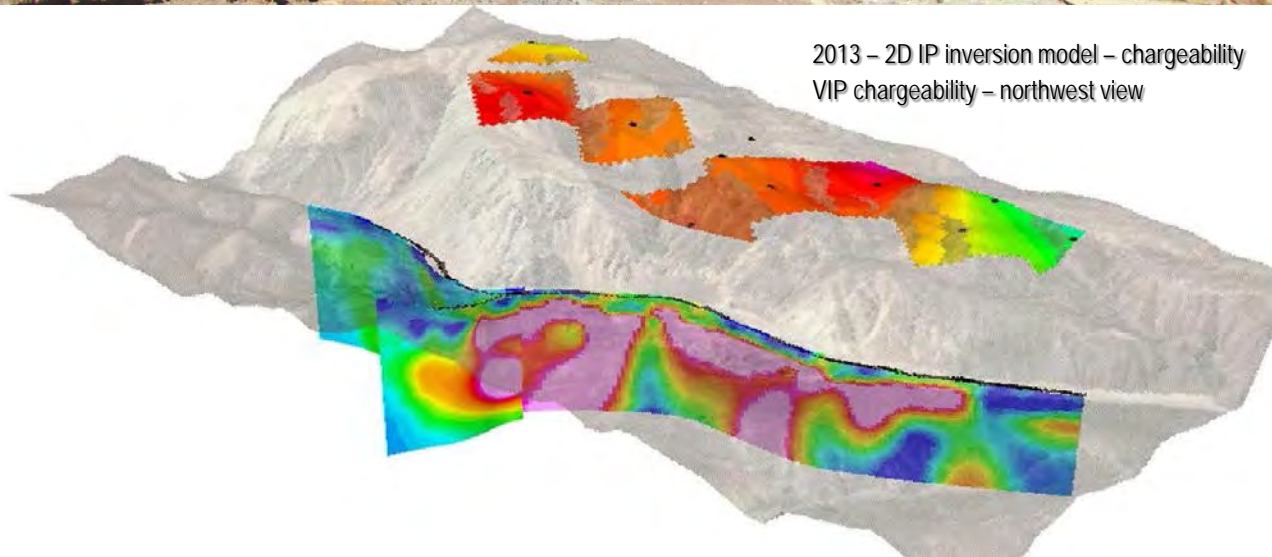
- Palmani project is a farm-in with Rio Tinto – in the porphyry belt region of northern Chile;
- Sulfato project is a farm-in with Chile's Codelco – in the region near the Collahuasi copper mine
- Humito is 100% owned by a CYU subsidiary. Includes an area under farm-in with Xstrata Chile
- Exploration activities proposed in 2013 at Sulfato & Palmani



Chile – Sulfato Copper Porphyry Prospect

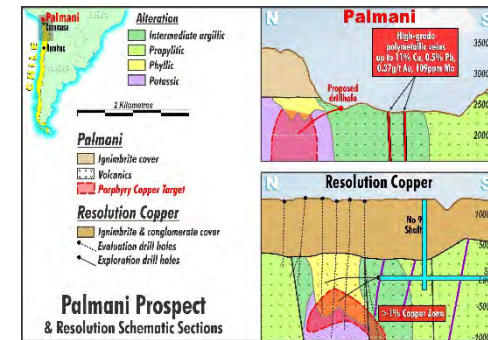
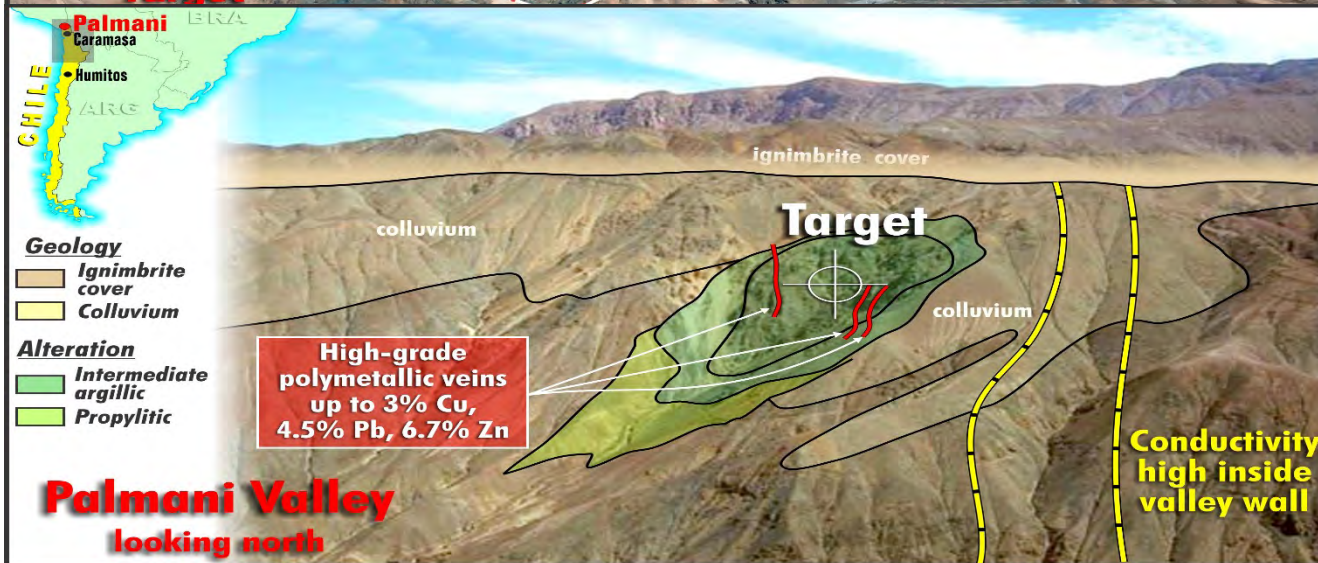
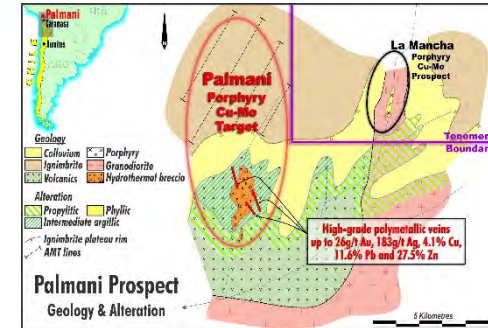
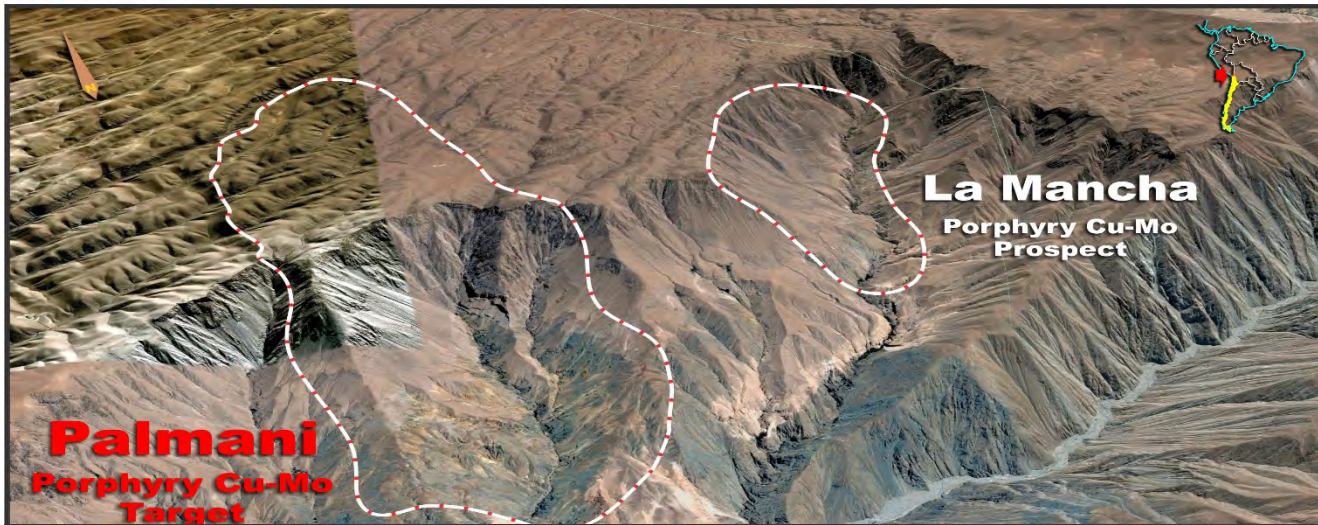


2013 – 2D IP inversion model – chargeability
VIP chargeability – northwest view



Potential deep seated porphyry zone – previous (1997) drilling 92m @ 0.65% copper

Chile – Palmani Copper Porphyry Prospect



untested potential deep seated porphyry zone covered by >400m overburden

San Mu Mining JV

- Yunnan Copper San Mu Mining Industry Co Ltd (San Mu) is a China-registered corporation
- San Mu's Articles establish a corporate purpose of exploring & developing minerals in China and neighboring countries
- CYU holds 51% of the shares in San Mu. 49% held by Yunnan Copper Industry (Group)
- Limited exploration success to present time – existing Laos projects to be disposed
- Yunnan Copper representatives continue to assess these and potential future project opportunities in Laos, Cambodia and other nearby regions incl mainland China.





CYU'S Board of Directors



Mr Zihua Yao (Chairman) – mining engineer with 30 years experience in mining and exploration in China. Deputy General Manager of Chinalco Yunnan Copper Industry (Group) Co Ltd since 2010



Mr Paul Williams (Managing Director) – commercial lawyer with over 25 years experience. Most recently with Mitsui's Coal Division



Mr Robert Yang (Director) – Commerce major from Uni of NSW, with 20 years experience in mineral resources trading and project investment



Mr Richard Hatcher (Director) – geologist with 17+ years experience in exploration & development projects in Australia, South Pacific, New Zealand & Latin America



CYU Corporate Summary

ASX (Australia) Code – CYU

(As at 8 July 2013):

Shares on issue – 247.99m

Market capitalisation – A\$13.1m

Average daily volume – 93,376 shares

Debt – Nil

Cash – A\$3.5m

Substantial shareholder – Yunnan Copper Industry (Group) Co Ltd (43%)

Contact Details

Level 8, 320 Adelaide St
Brisbane QLD 4000
Australia

Telephone: +61 7 3211 9013
Fax: +61 7 3010 9001

www.cycal.com.au

Paul Williams:
paul.williams@cycal.com.au

Robert Yang:
yzw@cycal.com.au



Richard Hatcher:
richard@cycal.com.au